



Nice – EV8 - The Coastal

One section of the EuroVelo 8 (Cycling) Route -
The Mediterranean Route

Very difficult



Very easy



4 h



30 km/19 m return trip

The Lympia Port (Nice)

The "Baie des Anges" Marina



DÉPARTEMENT
DES ALPES-MARITIMES

COMITÉ RÉGIONAL DU TOURISME
CÔTE D'AZUR



EuroVelo 8 (EV8) is a major cycling sightseeing itinerary that passes through eleven European countries from southern Spain to Cyprus. The route is part of EuroVelo, a network of long distance cycling routes or 'EuroVelo' routes which cross over the European regions. When completed in 2020, the EuroVelo 8 is expected to total nearly 6,000 km.

In the Alpes-Maritimes, several sections are already completed- including the 'Littorale' or Coastal Route - a cycle path which goes along the coast for 15 km from the port of Nice to the "Baie des Anges" Marina, at Villeneuve-Loubet.

Ideal for exploring one of Europe's most famous waterfronts, this route is safe and easy to ride with the whole family and for all abilities.



If you wish to do this ride from Villeneuve-Loubet:

• From Nice, take the road to the seafront (RD 6098), then Boulevard Tabarly towards the car park La Fighière in the "Baie des Anges" Marina.

• By the A8, exit Villeneuve-Loubet or Villeneuve-Loubet Plage (from Antibes), towards the coast then follow the Boulevard Tabarly towards the car park La Fighière in the "Baie des Anges" Marina.

Allow 10 minutes from Nice airport.

FRENCH RIVIERA TOURIST BOARD

400, promenade des Anglais
BP 3126
06203 Nice Cedex 3
www.cotedazur-tourisme.com

Département des Alpes-Maritimes

147, boulevard du Mercantour
BP 3007
06201 Nice Cedex 3
www.departement06.fr



Find more
cycle rides
in the Alpes-Maritimes (06)
www.departement06.fr

Road-book

Wearing a cycle helmet is recommended.

The ride is 30km/19 miles return trip. You can do it in several stages: Stage 1, from Nice Port to the airport: 5.5km/3.5 m, - Stage 2 from the airport to the Cros-de-Cagnes port: 6 km/3.7m – Section 3: from the Cros-de-Cagnes port to the “Baie des Anges” Marina: 3.5km/ 2.2 m

The ride is undertaken under the full responsibility of the users. This bike path runs along the coast between the main road and the seafront path. It is safe but we recommend the utmost vigilance as users of the path must share it with skaters and numerous pedestrians who walk along it or cross it to go to the beach!

Start cycling from the Quay Papacino’s cycling path which goes along the Lympia Port in Nice. Observe the coloured facade along the house at No 4 **1**.

Keep cycling along the quay. Just before the big right-hand bend, notice the War Memorial on the other side of the road **2**.

Begin the descent to the Quai des États Unis.

Just before the artist Bernard Venet’s steel sculpture, “Neuf lignes obliques”, notice a small replica of the Statue of Liberty by the French sculptor Auguste Bartholdi **3**.

Continue to ride on the Promenade des Anglais until you reach the surroundings of the airport.

Note on your left the Memorial erected in memory of the victims of the air disaster of the Ajaccio-Nice Caravelle in 1968 **4**.

Continue cycling alongside the Nice Côte d’Azur airport, then ride over the Napoleon III bridge which crosses over the Var and marks the entrance to the Var river. Go past the tourist office and get to the fishing port of Cros-de-Cagnes.

Stop by the “pointus” - emblematic boats belonging to local fishermen **5**.

Note the Chapelle (“Yellow Church”) built by the fishermen with its small bell tower. Then have a look at the “Banc de Poissons” (fish sculpture) created by French artist Sylvain Subervie **6**. This monumental work of hammered wrought iron reminds one of basketry framework.

The ride continues to the Hippodrome. Note the sculpture outside the main entrance **7**.

Shortly afterwards you enter Villeneuve-Loubet.

Then continue to the “Baie des Anges” Marina **8**, an area of original pharaonic architecture built between 1969 and 1993, the curves of which evoke the waves of the Mediterranean and the hills of the Nice countryside.





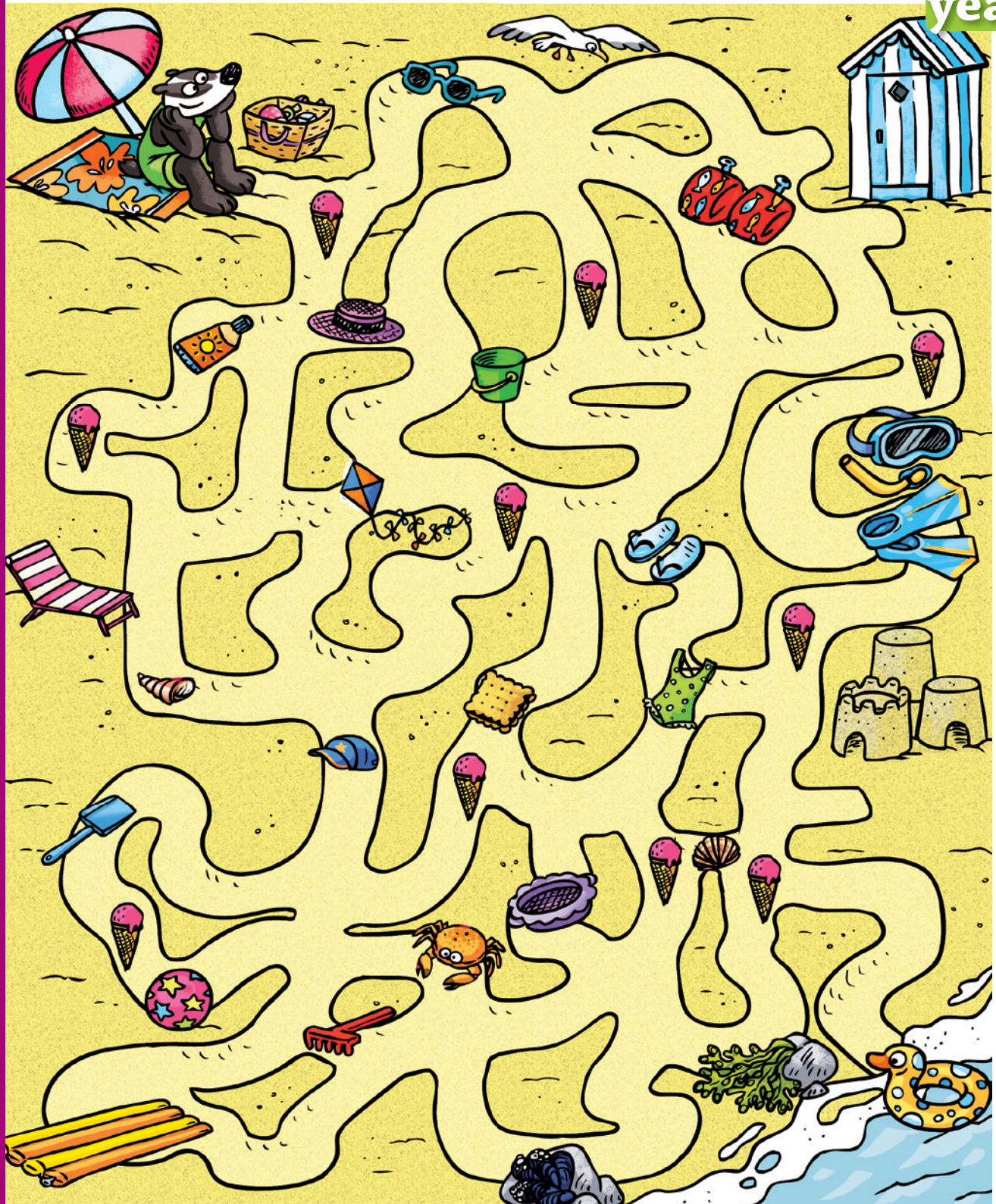
Nice - The Coastal

Inspector Rando is riding to the beach. But which path will he take? Follow the path taken by Inspector Rando using the information on the following page. Whenever Inspector Rando finds an ice-cream in his way, colour in, in order, the ice creams on the frieze at the bottom of the page.

At the end, note the number of frieze ice-creams in the answer box.

If you start your route at Villeneuve-Loubet then follow the path from the inflatable duck ring to reach... Inspector Rando.

4/6
years



© randoland 2 015. Illustrations : Armelle Drouin.

A frieze of ten ice cream cones, each labeled with a number from 1 to 10.

Your answer

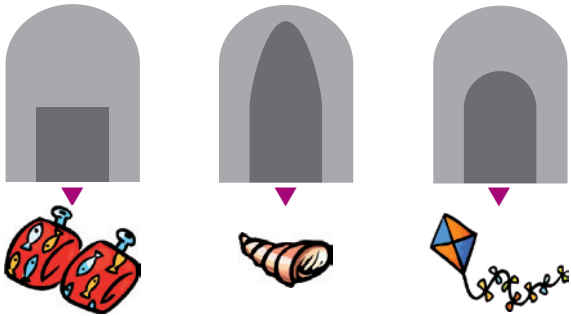
1 The Lympia Port

What cloud contains the right figures of the date engraved above the door?
You'll find out Inspector Rando's first steps.



2 The War Memorial

Which silhouette shows the shape of the Memorial?



3 The Quai des États-Unis

Which picture shows the shape of the statue's crown?



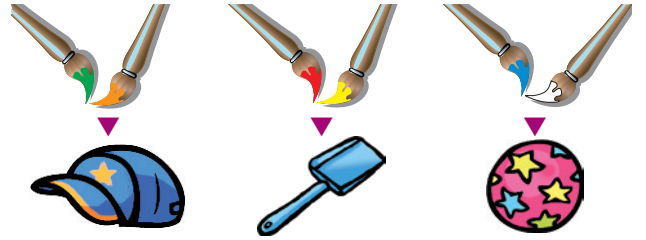
4 The Memorial

Which photo shows the tree you can see next to the memorial?



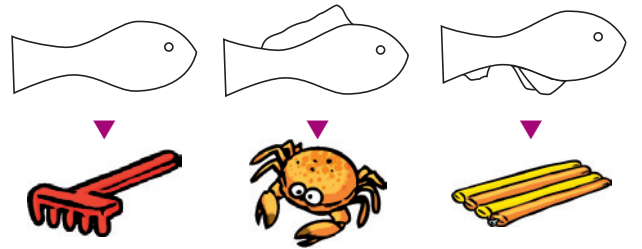
5 The port of Cros-de-Cagnes

Which brushes were used to paint the boat No. 257741?



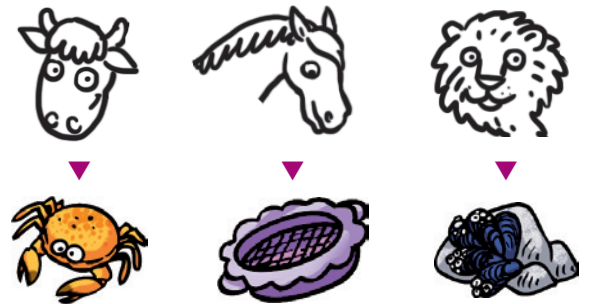
6 "Le Banc de Poissons" (The Shoal of Fish)

Which sketch looks most like the fish?



7 The Hippodrome

Which animal is "stuck" in the stone?



8 The "Baie des Anges" Marina

How many pyramids shaped large buildings are there in the Marina?



Nice - The Coastal

RIDDLE

With 125 km of cycle paths in the Metropole of Nice Côte d'Azur and 8206 parking places for bicycles, the city of Nice holds the national award "Ville Vélotouristique" – 'Bicycle Touristic City': it offers cyclists hospitality, services and equipment suitable for cycling.

Inspector Rando, on vacation in Nice, decides to visit his friend by bike, while visiting the seafront.

So he uses the coast road, but he is very absent-minded and has forgotten the name of the meeting point! Help him to get his memory back!

7/9
years



You have the map below.

Where are red dots, read the instructions. They will enable you to solve the main puzzle.

At the end of your ride, visit www.randoland.fr to check your answer.



For all activities on this page, place your answers alongside the relevant number on the grid at the bottom right of the page.

1 The Lympia Port

Under the yellow rectangle in the photo (right) above is written the name of this house. Note it in the grid.



2 The War Memorial

Inspector Rando asked three people to describe the War Memorial to him. However, to complicate his task, they have replaced all the vowels by a single vowel. Help the inspector to decode their claims and find one that is mistaken. Then place his first name in the grid.

Emmanuel: Yuu cun suu twu sculpturus un uuthur sudu uf thu cuntrul unscruptuun.

Patricia: Thi Minimint is liss thin tin mitres high

Matthias: Onsoode yoo con soo on orn woth onscroptoons on ot

3 The Quai des États-Unis

In this riddle the consonants are worth +3 and the vowels +2.

Ex.: TREE → 2 + 2 + 3 + 3 = 10 → TEN

Calculate the value of the name of the object in the right hand of the statue.

Write your answer in the grid in full.

4 The Memorial

Read the text found on the Monument. Where did the plane that exploded in flight come from? Write the name of this city (beginning with the letter 'A') in the grid.

5 The port of Cros-de-Cagnes

T	A	A	B
R	O	D	N
U	M	O	D
D	D	N	T

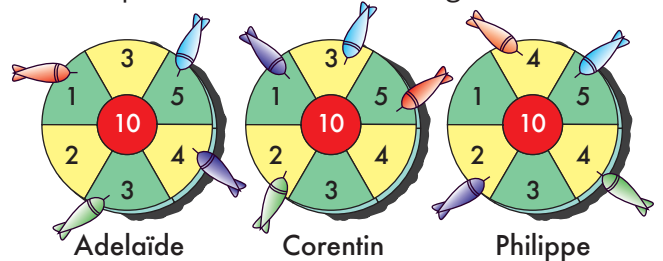
Cross out all the letters in the grid that make up the name of the blue and white boat.

Among the remaining letters, which appears most often?

Record your answer in the grid.

6 "Le Banc de Poissons" (The Shoal of Fish)

Adelaide, Corentin and Philippe have just finished a game of darts. One of them realizes that his/her score equals the number of fish on the panel. Put this person's first name in the grid.



7 The Hippodrome

Right or Wrong?

The horse's position suggests that it is galloping.

Write your answer in the grid.

Hint

- The walk is a walking, symmetrical gait.
- The trot is a leaping, symmetrical gait.
- The gallop is a leaping, asymmetrical gait.

8 The "Baie des Anges" Marina

Each of the children below gives a range for the number of floors of the four large buildings.

Manon: 18 < ... < 25

Anaïs: 10 < ... < 17

Louis: 25 < ... < 35

Write the name of the one who is right.



Answer Grid

Circuit No. 0608801M

1	>								
2	>								
3	>								
4	>								
5	>								
6	>								
7	>								
8	>								

Put the letters from the coloured boxes in order to find the meeting place.

Your answer:

Nice – The Coastal

RIDDLE

The construction of the extraordinary building complex of the “Baie des Anges” Marina took nearly 25 years.

This unique pharaonic architectural work (70 m high, a marina of 530 berths, a shopping centre and 4 giant pyramids of 1500 apartments), received the “twentieth century heritage” award from the Ministry of Culture.

Its curves evoke the waves of the Mediterranean and the hills and valleys of the Nice countryside.

But do you know the name of the architect who created this complex? With the help of Inspector Rando throughout your ride you will find clues that will allow you to find out.

+10
years



FAMOUS ARCHITECTS*

- ▶ **Gae Aulenti**, born April 4, 1927 in Palazzolo della Stella (Italy); died October 31, 2012.
- ▶ **Marcel Breuer**, born May 21, 1902 in Pecs (Hungary); died on 1 July 1981.
- ▶ **Minangoy André**, born June 10, 1905 in Lille (department number 59 – France); died 12 September 1985.
- ▶ **Oscar Niemeyer**, born October 15, 1907 in Rio de Janeiro (Brazil); died December 5, 2012.
- ▶ **Jean Prouvé**, born April 8, 1901 in Paris (department number 75 – France); died 23 March 1984.
- ▶ **Jean Renaudie**, born June 8, 1925 at Meyze (department number 87 – France); died 13 October 1981.
- ▶ **Paolo Soleri**, born June 21, 1919 in Turin (Italy); died April 9, 2013.
- ▶ **Utzon**, born 9 April 1918 in Copenhagen (Denmark); died 29 November 2008.
- ▶ **Vicariot Henri**, born May 28, 1910 in Angoulême (department number 16 – France); died 6 February 1986.

* Information given is approximate.

You have the map below. Where there are red dots, read the instructions. They will enable you to solve the main puzzle. At the end of your ride, visit www.randoland.fr to check your answer.



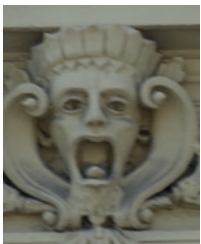
During your ride, at each numbered marker point read the information carefully. This will give you the answer to the main riddle.

1 The Lympia Port

Of the three photos below, which one shows one of the gargoyles that you can see above the second floor windows?

Hint

A gargoyle in architecture is an ornament usually representing a human face, often of frightening appearance. Its function was originally to keep evil spirits away and thus prevent them from entering a building.



3



4



5

The date of birth of the person you are looking for is not three times the number listed under the correct answer.

2 The War Memorial

Use the letters to form the missing words in the French text below:

O R N U M H R E G N S E L V I E R O O E I

"Souvenez-vous des _____ que nos pères ont accomplies de leur temps et vous recevrez une _____ et un _____ immortels."

The remaining letters allow you to restore the name of a character who, unfortunately, is not the one you want.

3 The Quai des États-Unis

What is the statue holding in its raised hand?

TORCH - CROWN

Add up the points that would be the word to this game of Scrabble. Multiply this value by 2, then add 3. The day of death of the architect sought is not the one you are looking for.

Hint

Letters of the Scrabble®

D ₂	H ₄	U ₁	R ₁
A ₁	T ₁	F ₄	C ₃
O ₁	N ₁	E ₁	X ₁₀

4 The Memorial

Inspector Rando interviewed tourists about the place where the monument is located.

5 The port of Cros-de-Cagnes

The green and white boat and the blue and white each have a six-digit number. In what range can you rank these two numbers:

A: 254 000 < ... < ... < 258 000

B: 257 000 < ... < ... < 260 000

C: 256 000 < ... < ... < 259 000

The letter corresponding to the correct answer is not the initial of the surname of the desired architect.

6 "Le Banc de Poissons" (The Shoal of Fish)

The architect's birthday number is not equal to the number of fish in the shoal.

7 The Hippodrome

Here are two pictures of the sculpture. Only one has been retouched. Which one?



Laura



Antony

If the author of the retouched image is a man then the architect you are looking for is a man, if not, it is a woman.

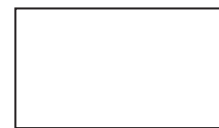
8 The "Baie des Anges" Marina

Which geometric shape do the buildings remind you of? Count the letters and add 1.

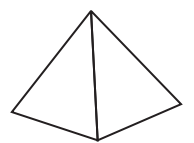
The architect whose department of birth number begins with this total is not the one you want.



Square



Rectangle



Pyramid

You should now have found the name of the architect.

Circuit No. 0608801G

Your answer: